

Detection of Hydrothermal potential zones using remote sensing satellite data in Ramand region, Qazvin Province, Iran

Abolfazl Ezzati^{1*}, Reza Mehrnia², Kimiya Ajayebi³

1- Department of Geology, Science and Research Branch, Islamic Azad University, Iran

2- Department of Geology, Payam Noor University, Iran

3- Department of Geology, Islamic Azad University, Iran

* Corresponding Author: Bruceamir@yahoo.com

Abstract

Ramand region is a part of Qazvin province located in South West of Buin-Zahra. In this region, hydrothermal alterations have been extended within magmatic occurrences and therefore are mostly detectable by remote sensing techniques. Altered facies could be well enhanced after applying Selective Principle Component Analysis (SPCA), Least Squares Fitting method (LS-Fit) and Spectral Angel Mapper (SAM) techniques on ASTER images. Remotely sensed photomaps can be created from such bands for detecting argillic and Fe-oxide overlapped alterations as unique but important traces of hypogenic environments. SPCA result showed that Ramand alteration spectrum reflects an orange to yellowish color that is casually indicated to mineralization potential surrounded by clayey and Fe-oxide aggregate halos. Also an advanced Silicification process has been detected within igneous units and subsequently suggested for more prospects according to satellite images. Our research has been introduced to identification of mineralization by using an expert SPCA technique issued by Crosta. Also we have verified PCA results with applying LS-Fit and SAM techniques respectively. These techniques not only realized the post-magmatic alterations but are suitable for spatial prognosis of ore-bearing mineralization respect to their paragenetic appearances. Finalized photomaps have been improved by mathematical algorithms before targeting Ramand alterations for fast field observations due to economical (minimal) sampling in performances.

Keywords: Remote sensing, Crosta, LS-Fit, SAM, Alteration, Ramand.

1– Introduction

Nowadays, producing geological maps with mineral exploration applications has been developed by satellite image processing possibilities. Remote sensing (RS) is a modern technology which without physical contacts can measure and analyze spectral characteristics of altered-mineralized regions. Remote sensing techniques also allowed identification of a large area with high accuracy and high speed productivity due to economical considerations (Beiranvand Pour *et al.*, 2013). Efficiency and resolution of images increase by using satellite data processing techniques. For many years the

ETM sensor images (Landset7) have been used to determine the location of hydrothermal alterations zones by applying techniques such as, "principal component analysis" (PCA) and the "least squares fitting" (Ls-fit). The emergence of ASTER sensor (Terra satellite), with 14 spectral band has a spatial resolution higher than ETM with accessibility to short wave infrared (SWIR). This accessibility provided by feasibility recognition the hydrothermal ore related minerals (Sabins, 1999). In this study, by using selective principal component analysis method, ETM spectrums used to detect epithermal alterations. Therefore

an alteration photomap has been produced for investigations in Ramand mineralized regions.

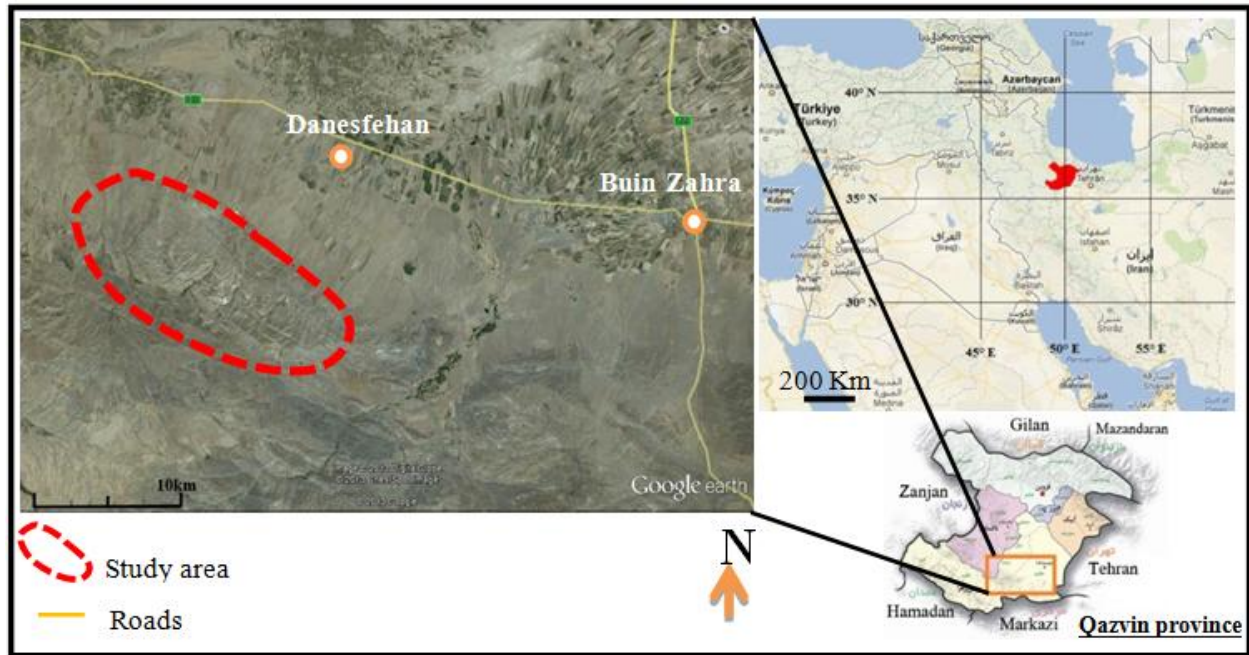


Figure 1) Ramand Study Area, SW of Buin Zahra, Qazvin, Iran.

2– Geology of the study area

According to the depositional-structural division of Iran, Ramand area is located in the northwestern margin of the Central Iran zone and from tectonical point of view, it is situated in Orumiyeh- Dokhtar zone. The Hasanabad fault is the major fault that passes through the area and Ramand Mountain is located in its northern side. As one of the old faults of the area, Hasanabad fault is the dominant active fault of the area. It has been influenced by new movements and has been active during Quaternary. The Buin Zahra earthquake of greater magnitude than 7.25 on the Richter scale (1962) that has occurred along this fault and devastated the adjacent villages confirms the activity of the fault in recent time. Hasanabad fault is the continuation of Buin Zahra fault that dominantly has compressional movements with southward dip and strike-slip inclinations. Furthermore, frequent number of faults with northwest- southeast dominant trend present in the area (Masoudi, 1989).

Ramand Mountain is located in the northwestern corner of Saveh 1:250,000

geological map and the central part of Danesfehan (Khiaraj 1:100,000) (Fig. 2).

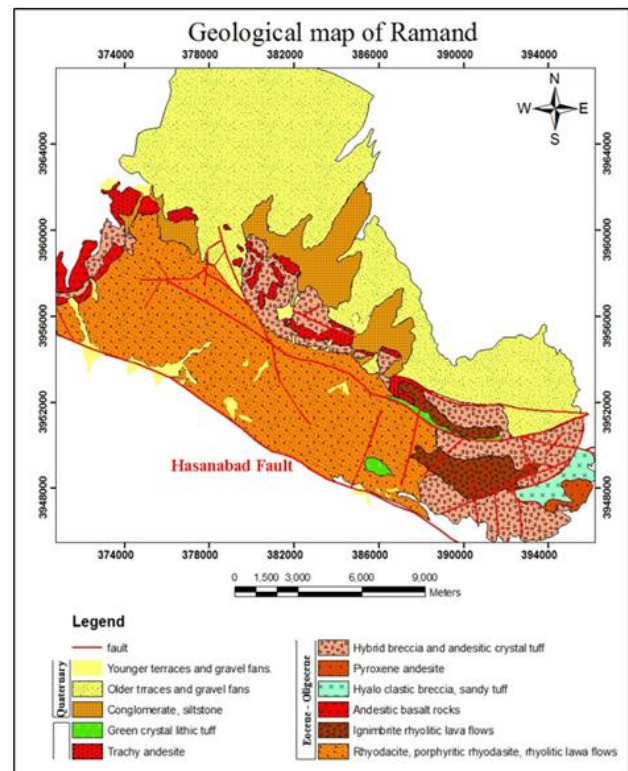


Figure 2) Ramand geological formations & structures (GSI, NJ 5961).

The host rock units of the alteration mostly are comprised of rhyodacitic- rhyolitic igneous rocks and tuff. Based on the field investigations and the results of XRD analyses, acidic and

intermediate volcanic rocks of Ramand Mountain area have variably undergone hydrothermal alteration, sometimes in dispersed form, under the influence of ascending hydrothermal fluids. These alterations are vastly extended in the area and mostly include argillic and silica phases' alteration. Silicified formations are the most common alteration in hydrothermal system. It is exposed in some parts of the wall rock as silicification and in some part in jasperoid form. Geochemical and petrographical characteristics of acidic volcanic rocks in the south of Danesfahan represent that they have been resulted from different petrogenesis processes. Occurrence of magmatic differentiation through fractional crystallization is the main process that have caused the generation of most of these rocks (Mansouri, 1998).

3– Remote sensing studies

The geology map was modified after the following image processes were made and these processes are SPCA, LS-Fit and SAM methods.

3.1- Implementation of SPCA technique for enhancement of alterations in Ramand region

In this method, reducing of the bands usually increases the probable mapping of definite processes according to discriminations between Eigen values (principal components-PC) (Loughlin, 1992). Hydroxyl-bearing minerals are important because of their abundance in the alteration zones. Crosta technique defines the nature of alteration halos surrounding most of magmatic intrusions. Selective 7,5,4,1 ETM bands for mapping hydroxyls and selective 5,4,3,1 bands for mapping iron oxides have been proposed. The component analysis results of the first selections known as F-series and the second known as H-series. Studying Eigenvector of F and H-Series, the PC4 values made the most differential spectrums for revealing iron oxides

and clayey minerals respectively (Tables 1 and 2).

Table 1) The result of PCA for Enhancing Iron oxides.

Eigenvector	Band 1	Band 3	Band 4	Band 5
PC 1	0.44759	0.597438	0.33271	0.57623
PC 2	-0.0279	0.635341	0.7262	0.261136
PC 3	-0.7294	0.045967	-0.2202	0.646037
PC 4	0.51656	0.487131	-0.5599	0.427087

Table 2) The result of PCA for Enhancing Hydroxyls.

Eigenvector	Band 1	Band 4	Band 5	Band 7
PC 1	0.47284	0.354945	0.61472	0.522072
PC 2	-0.1644	0.784691	0.07611	0.592812
PC 3	0.8517	0.270296	0.4443	-0.06449
PC 4	0.15489	0.430365	0.64726	-0.6098

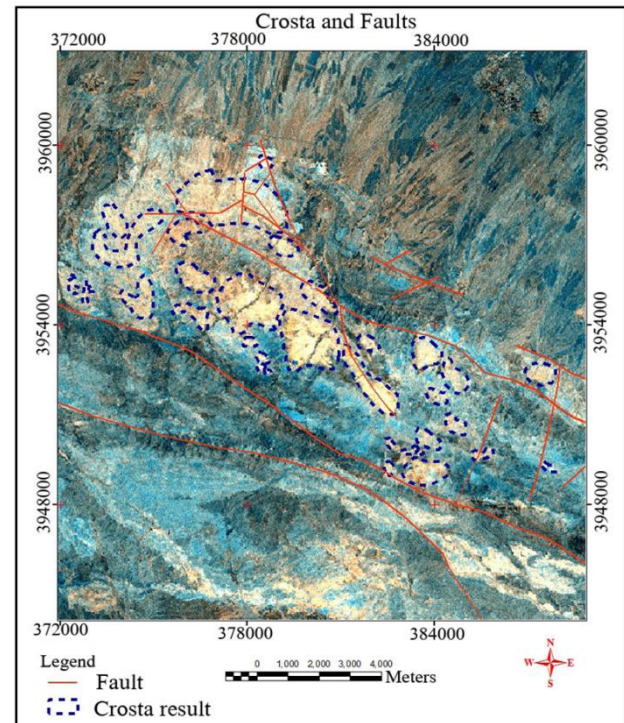


Figure 3) Hydrothermal Alterations according to Crosta PCA technique.

Applying Band Math technique caused adding H to F components for obtaining the new H+F spectrums. RGB visible panels were constructed

by these components as: $R=H$, $G=H+F$ and $B=F$ (Table 3) for mapping hydrothermal alterations within yellowish-buff to orange colors of photomap (Fig. 3).

A Selective Principle Component Analysis (SPCA) technique for identifying clay + iron oxide aggregation has been used and correlated with geochemical haloes for introducing young (Neogene) alteration facies related to epithermal mineralization processes in Ramand region.

3.2- Detection of siliceous facies using Crosta technique

Crosta PCA is a well developed technique for identifying alteration halos in post-magmatic environments. This technique was proposed for the first time by Crosta and Moore (1989), to indicate a specific purpose as a lighter pixel than the other phenomenon, in one of the principal component images. This is an improved technique for revealing hydrothermal alterations containing iron oxides and clayey matrixes with hydroxyl ions content (Mehrnia, 2006). In practice, composite halos have geochemical association with hydrothermal systems.

Table 3) Bands Compositing components Crosta technique

R	G	B
H	H+F	F

Therefore it can be determined by Crosta technique. In addition, due to large amount of paragenesis of silica mineralization, the electromagnetic responses of Crosta photomap are coincided with clay, iron oxides and silicification aggregations in this region. Our field observations (Fig. 4) plus instrumental (X-ray) and micrographic studies (Fig. 5) confirmed that the reality of remotely sensed mineralization is in spatial relations with quartz, illite and jarosite (Table 4) (Ezzati *et al.*, 2013).

It means that, for the first time in Silica-bearing facies, a Crosta based technique has been carried out for separating Si-alterations

successfully. In a prone area of hydrothermal deposits with large scale amounts of siliceous and iron oxide mineralization, Crosta technique can be easily introduced these areas among the hydrothermal alteration halos.



Figure 4) Jasperoid facies in the study area(see to the South West).

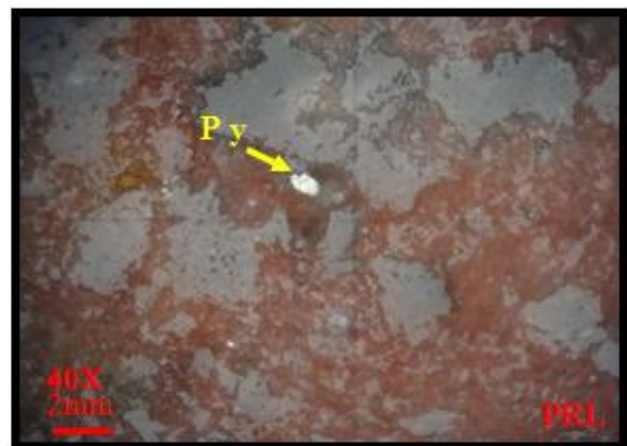


Figure 5) The higher values of iron oxides cause to red colors of matrix. (Probably presence of jasperoid).

Table 4) The X-ray results.

Sample	Major Phase	Minor Phase	Trace Phase
M37	Quartz, Muscovite-Illite	Albite, Natrojarosite	–
M38	Quartz, Illite	Orthoclase, Jarosite	Kaolinite
M22	Quartz, Albite, Orthoclase	Montmorillonite, Kaolinite	–

3.3- Least Squares Fitting method (LS-Fit)

The technique assumes that the bands used as input values are behaving as the variables of a linear expression; and they value of the equation, namely the predicted band information, gives us a calculated output value (Fujimitsu, 2012). This predicted band is what that band should be according to the linear equation. The problem of having vegetation responsible of some reflectance in the bands that are used to map clay minerals can therefore be omitted by using this technique. The vegetation is mapped in the predicted band with the values that are calculated just by using the reflectance information in the other bands.

The minerals which are sensitive to a specific band are then differentiated from the features which are reflective to the other bands as well; just by taking the difference between the predicted values and the original values (Clark *et al.*, 1990). The OH-bearing minerals include an aggregate of argillic, advanced argillic and sericitic alteration minerals that could exactly represent the locations of alteration zones and hydrothermal activities. Whole bands should be modeled (differentiated) relative to one band. Because of high absorption of argillization in Band 7 of ETM image, total bands are modeled relative to this band. Subsequently, obtained dark pixels represent the target alteration. Figure No. 6 is obtained after applying a stretch and sharpening the aim pixels.

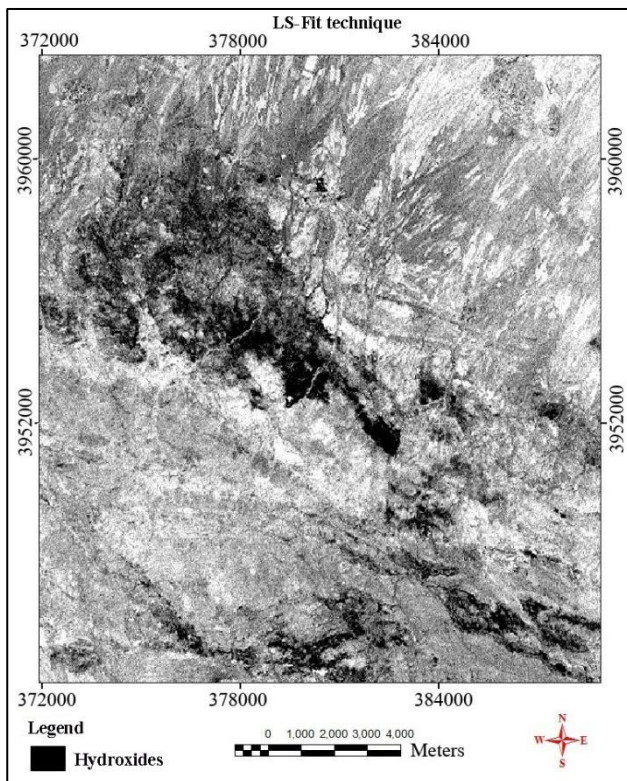


Figure 6) LS-Fit image of Ramand area (band 7 as the modelled band) showing Clay alteration as dark pixel.

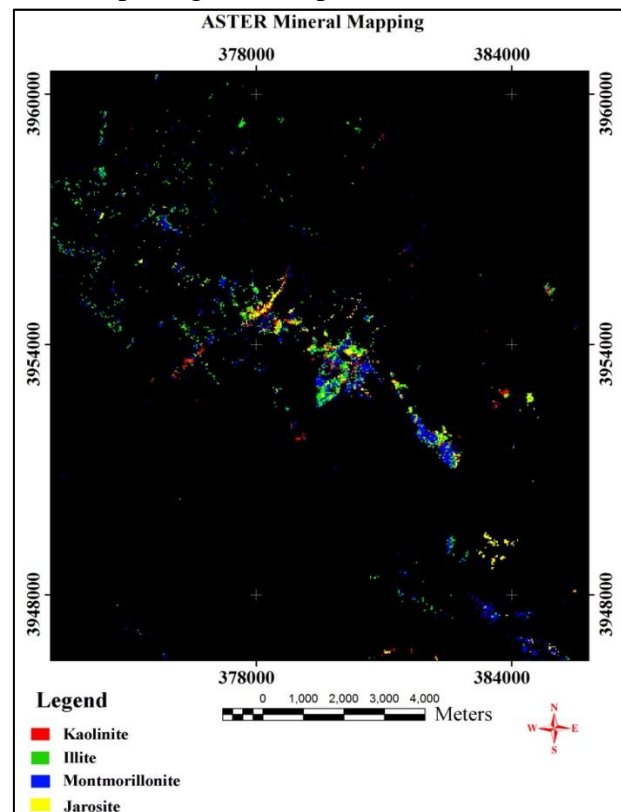


Figure 7) Final classification image map for SAM.

3.4- spectral angel mapper techniques (SAM)

The Spectral Angel Mapper (SAM) technique (Kruse *et al.*, 1993) was applied to test the spectral similarity between pixel spectra and mineral reference spectra for kaolinite, illite, montmorillonite and jarosite (OH-bearing minerals).

The reference spectra were extracted from the United States Geological Survey (USGS) mineral spectral library, and were resampled to the same ASTER bands width, using filter function. Similarities between image spectra and reference spectra were calculated. Small SAM indicates better similarities between pixel spectra and references. Bands 4 to 8, around the 1400-2200 nm (Fig. 8) diagnostic hydroxyl absorption band, were used in the analysis (Fig.7).

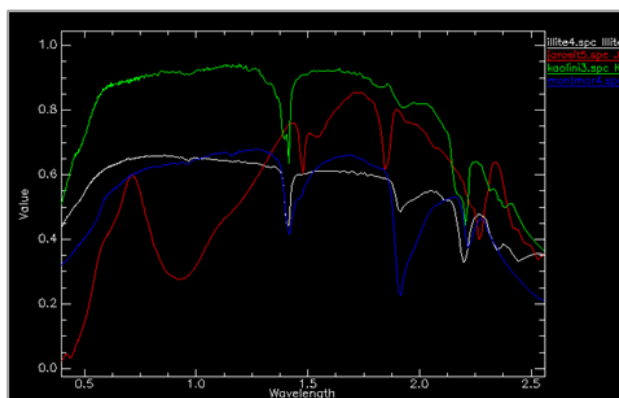


Figure 8) USGS library mineral spectra used in this study. W: Illite, R: Jarosite, B: Montmorillonite, G: Kaolinite.

4- Conclusions

After using the conventional alteration mapping methods on the ETM and ASTER image in the study area, we found that the Crosta method showed their efficiency to define the area of hydrothermal alterations. PCA illustrated the iron-oxides and hydroxyl altered minerals area of this region very clear. We have mapped successfully the spatial distribution of OH-bearing mineral of the study area using the LS-Fit and SAM methods. Sampling and instrumental analysis results showed that a clayey matrix within silica based mineralization

is dominant in this region. Also thin section studies have been well done and confirmed the hydrothermal origination of ore bearing solutions in a post-magmatic environment. From remote sensing study, Ramand prospected regions have enough potentials for epithermal mineralization, because of extending number of solution related alterations on surfaces and paragenesis of post-magmatic mineralization in the altered regions (Kaolinite, Jasperoid, etc). It is indicated to a continuous mineralization in depth of alterations. Therefore, a comprehensive investigation on host unit features are highly recommended for further explorations with emphasizing on precious metals accumulations in the silica veinlets.

Acknowledgments:

The authors would like to thank Dr. A. Beiranvand Pour and Dr. B. Sadeghi for their appreciate comments which help us to improve manuscript.

References:

- Crosta, A. P., Moore, J. M. 1989. Enhancement of Landsat Thematic Mapper imagery for residual soil mapping in SW Minais Gerais State, Brazil: a prospecting case history in Greenstone belt terrain. In: Proceedings of the Seventh ERIM Thematic Conference: Remote Sensing for Exploration Geology. pp. 1173–1187.
- Crosta, A. P., De Souza Filho, C. R., Azevedo, F., Brodie, C. 2003. Targeting key alteration minerals in epithermal deposits in Patagonia, Argentina, using ASTER imagery and principal component analysis, International journal of Remote sensing: 24: 4233–4240.
- Clark, R. N., Gallagher, A. J., Swayze, G. A. 1990. Material absorption band depth mapping of imaging spectrometer data using a complete band shape least-squares fit with library reference spectra. In R. O. Green (Ed), Proceedings of the second airborne visible/infrared imaging spectrometer (AVIRIS) workshop. JPL Publication: 90–54, 176–186.
- Ezzati, S. A., Mehrnia, S.R., Ajayebi K. S. 2013. Principal Component Analysis Results

for Identification of Hydrothermal Alteration in Ramand Region, 7th International Symposium on Advances in Science and Technology (7th SASTech), Bandar-Abbas, Iran.

Fujimitsu, Y., Bodruddoza, M. 2012. Mapping hydrothermal altered mineral deposits using Landsat 7 ETM⁺ image in and around Kuju volcano, Kyushu, Japan, Journal of Earth System Science: 121, 1049–1057.

Kruse, F. A., Lefkoff, A. B., Boardman, J. W., Heidebrecht, K. B., Shapiro, A. T., Barloon, P. J., Goetz, A. F. H. 1993. The Spectral Image Processing System (SIPS)- Interactive visualization and analysis of imaging spectromer data. Remote Sensing of Environment: 44, 145–163.

Loughlin, W. P. 1992. Principal Component Analyses for Alteration Mapping. Photogrammetric Engineering and Remote Sensing: 57, 1163–1169.

Mehrnia, S. R. 2009. Using fractal filtering technique for processing ETM data as main criteria for evaluating of Au-indices in north-west of Iran, Int. Conference on Computer Technology and Development (ICCTD), ISBN: 978-0-7695-3892-1, INSPEC Accession Number :11036686,v. 2, p. 298–302.

Mansouri, F. 1998. Petrology of eocene volcanic rocks in the southwest of danesfehan area. MSc Thrsis, Tarbiat Moallem University of Tehran.

Masoudi, F. 1989. Stratigraphy, petrography and petrology of volcanic rocks at south of Buin-Zahra. MSc Thesis, Tarbiat Moallem University of Tehran.

Beiranvand Pour, A., Hashim, M, Marghany. M. 2013. Exploration of gold mineralization in a tropical region using Earth Observing-1 (EO1) and JERS-1 SAR data: a case study from Bau gold field, Sarawak, Malaysia. Arabian Journal of Geosciences. DOI 10.1007/S12517-013-0969-3.

Sabins, F. F. 1999. Remote sensing for mineral exploration. Ore Geology Reviews: 14, 157–183.

Received: 31 December 2013 / Accepted: 10 April 2014 / Published online: 30 April 2014

EDITOR-IN-CHIEF:

Dr. Vahid Ahadnejad:

Payame Noor University, Department of Geology. PO BOX 13395–3697, Tehran, Iran.
E-Mail: edchief@jtethys.org

EDITORIAL BOARD:

Dr. Jessica Kind:

ETH Zürich Institut für Geophysik, NO H11.3, Sonneggstrasse 5, 8092 Zürich, Switzerland
E-Mail: jessica.kind@erdw.ethz.ch

Prof. David Lentz

University of New Brunswick, Department of Earth Sciences, Box 4400, 2 Bailey Drive Fredericton, NB E3B 5A3, Canada
E-Mail: dlentz@unb.ca

Dr. Anita Parbhakar-Fox

School of Earth Sciences, University of Tasmania, Private Bag 126, Hobart 7001, Australia
E-Mail: anitap1@utas.edu.au

Prof. Roberto Barbieri

Dipartimento di Scienzedella Terra e Geoambientali, Università di Bologna, Via Zamboni 67 – 40126, Bologna, Italy
E-Mail: roberto.barbieri@unibo.it

Dr. Anne-Sophie Bouvier

Faculty of Geosciences and Environment, Institut des science de la Terre, Université de Lausanne, Office: 4145.4, CH-1015 Lausann, Switzerland
E-Mail: Anne-Sophie.Bouvier@unil.ch

Dr. Matthieu Angeli

The Faculty of Mathematics and Natural Sciences, Department of Geosciences, University of Oslo
Postboks 1047 Blindern, 0316 OSLO, Norway
E-Mail: matthieu.angeli@geo.uio.no

Dr. Miloš Gregor

Geological Institute of DionysStur, Mlynska Dolina, Podjavorinskej 597/15 Dubnicana dVahom, 01841, Slovak Republic
E-Mail: milos.gregor@hydrooffice.org

Dr. Alexander K. Stewart

Department of Geology, St. Lawrence University, Canton, NY, USA
E-mail: astewart@stlawu.edu

Dr. Cristina C. Bicalho

Environmental Geochemistry, Universidade
Federal Fluminense – UFF, Niteroi–RJ, Brazil
E–mail: ccbicalho@gmail.com

Dr. Lenka Findoráková

Institute of Geotechnics, Slovak Academy of
Sciences, Watsonova 45,043 53 Košice, Slovak
Republic
E–Mail: findorakova@saske.sk

Dr. Mohamed Omran M. Khalifa

Geology Department, Faculty of Science, South
Valley, Qena, 83523, Egypt
E–Mail: mokhalifa@svu.edu.eg

Prof. A. K. Sinha

D.Sc. (Moscow), FGS (London). B 602,
VigyanVihar, Sector 56, GURGAON 122011,
NCR DELHI, Haryana
E–Mail: anshuksinha@gmail.com